

Hamilton Island *Business Events*

hamiltonisland.com.au/BusinessEvents



HAMILTON ISLAND
GREAT BARRIER REEF AUSTRALIA



WHY MEET ON HAMILTON ISLAND?

Along with its unique island location and variety of accommodation, Hamilton Island has the largest business event facilities in the Whitsunday region, with the ability to cater for 10 to 700 delegates. Offering an idyllic setting for your next conference, product launch, exhibition or incentive, here on Hamilton Island, you'll find:

- / A one-stop destination which makes your planning easy. Purpose-built meeting venues and facilities, all within close proximity, ensure your guests are always close by whilst also having the freedom to explore an island. Professional staff and a long-standing on-site audio visual company (AVPartners) will ensure the smooth running of your business event.
- / Unique event venues and facilities including private islands, sandy beaches, poolside marquees, piers and lawns, each with a unique backdrop that is guaranteed to inspire.
- / Signature dinner and cocktail party packages that leave lasting memories of an amazing event. Access to fireworks, bands, entertainers and technicians makes anything possible.
- / An endless choice of inspiring dinner locations and team building group activities, allowing guests to get out and explore the island and its surrounding environment, including the Great Barrier Reef and Whitehaven Beach.
- / Easy access with direct flights from Sydney, Melbourne and Brisbane, plus complimentary Hamilton Island airport to accommodation transfers.

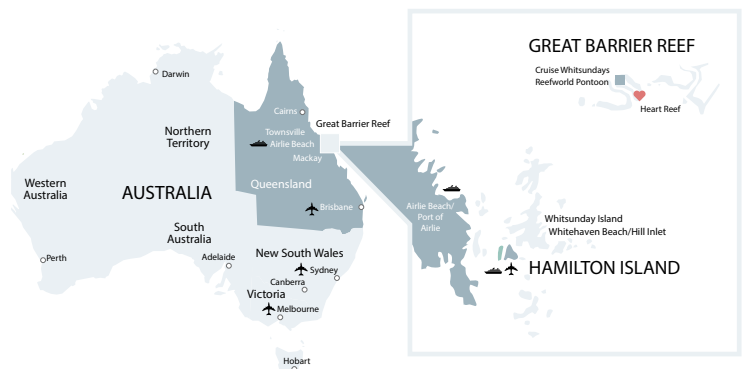
To ensure all the hard work is done for you, a dedicated Event Coordinator is assigned to your group to combine these elements and tailor a program that's guaranteed to be a success. You'll also have your own Accommodation Coordinator to assist with your accommodation bookings.



LOCATION AND ACCESS

Hamilton Island is perfectly located just off the Queensland coast of Australia and in the heart of the Great Barrier Reef. Of the 74 Whitsunday Islands, it is the largest inhabited island, positioned approximately 887km north of Brisbane and 512km south of Cairns (by air).

The only island in the Great Barrier Reef with its own commercial airport, access to Hamilton Island is easy with short, direct flights from Sydney (2 hours), Melbourne (3 hours) and Brisbane (90 minutes), plus good connections from other Australian cities. There are also quick 30-minute direct boat transfers from Shute Harbour or Port of Airlie on the mainland.



Climate

Situated on the same latitude as Honolulu in the northern hemisphere and Mauritius in the south, Hamilton Island enjoys a year-round tropical climate with an average temperature of 27°C.

January	31°C / 87°F	July	22°C / 71°F
February	30°C / 86°F	August	23°C / 73°F
March	29°C / 84°F	September	25°C / 76°F
April	27°C / 80°F	October	28°C / 82°F
May	24°C / 75°F	November	29°C / 84°F
June	22°C / 71°F	December	30°C / 86°F

Airport Transfers

A return complimentary transfer service is provided from Hamilton Island airport or marina to your hotel accommodation. This transfer service meets all groups with a Hamilton Island representative and portage.

Private Check-ins

Hamilton Island offers a range of private check in options, including at our Beach Pavilion, or at One Tree Hill which provides stunning views of the Whitsundays.

Getting Around

Replacing cars on the island, golf buggies are the main form of transportation. Buggies are available for hire or are provided complimentary for Holiday Home, Yacht Club Villa and qualia guests. Complimentary Island Shuttle transfers operate from 7am to 11pm daily, with private group transfers available at an additional cost. For a great team building activity, why not try our 'Amazing Race' style Buggy Rally!



Hamilton Island boasts the most comprehensive business event facilities in the Whitsundays, catering for 10 to 700 delegates. There are a total of 15 conference rooms, from boardrooms for small meetings, beachfront venues such as the Endeavour Room, through to the purpose-built Conference Centre suitable for large conferences, product launches, exhibitions and incentives. Most are within easy walking distance, meaning breakout sessions are easily accessible. In 2023, our Audio-Visual partners, AV Partners Whitsundays installed brand new state-of-the-art technical equipment in all conference rooms on Hamilton island, including a modular 168 LED screen in our Conference Centre that is sure to impress your guests.

The Hamilton Island Yacht Club brings a new standard of excellence through its unique spirit and style. Designed by Australian architect Walter Borda, the Hamilton Island Yacht Club provides a business event venue like no other in Australia. Venues include the Ketch room with its stunning floor to ceiling windows and views across the sparkling waters of Dent Passage, along with a state-of-the-art Auditorium. The Yacht Club is the perfect location for conferences of all sizes.

Conference Room and Dinner Venue Capacities

Room	Length (m)	Width (m)	Height (m)	Area (m2)	Theatre	Boardroom	Cabaret	Classroom	U-Shape	Banquet	Cocktail
Conference Centre Auditorium	38	24	10	912	1000	-	560	650	55	700	1000
Conference Centre Foyer	14.2	14.6	10	207.32	-	-	-	-	-	-	-
Meeting Rooms - <i>Whitsunday, Island, Beach or Whitehaven</i>	9.5	4.75	2.8	45	40	20	-	24	-	-	-
Meeting Rooms - <i>Whitsunday Island or Whitehaven Beach</i>	19	4.75	2.8	90	80	42	48	48	-	-	-
CC Boardroom	-	-	-	-	-	12	-	-	-	-	-
Endeavour Room	29	15.8	3.6	458	500	-	240	214	-	-	-
Endeavour Room - Beach Side	15	15.8	3.6	237	200	30	96	108	45	-	-
Endeavour Room - Resort Side	14	15.8	3.6	221	200	30	72	108	45	-	-
Chart Room	19	9.2	2.8	175	80	30	64	60	40	-	-
Main Pool	-	-	-	-	-	-	400	-	-	600	1,000
Catseye Beach	-	-	-	-	-	50	-	-	-	120	400
Beach Pavilion	33	13.2	-	407	420	300	224	-	-	280	400
Hamilton Island Golf Club	-	-	-	-	-	-	-	-	-	80	80
Hamilton Island Jetty	-	-	-	-	-	80	-	-	-	100	150
TAKO	-	-	-	-	-	150	-	-	-	-	200
Front Street	-	-	-	-	-	400	-	-	-	500	650

Yacht Club	Length (m)	Width (m)	Height (m)	Area (m2)	Theatre	Boardroom	Cabaret	Classroom	U-Shape	Banquet	Cocktail
Ketch	-	-	-	159	100	30	48	36	21	70	120
Cutter	-	-	-	126	100	30	48	36	21	60	100
Ketch and Cutter	-	-	-	285	190	60	96	72	36	130	300
Black Coral Boardroom	-	-	-	-	-	16	-	-	-	-	-
Barnacle	-	-	-	106	50	20	40	20	18	50	70
Auditorium	-	-	-	123	67	-	-	67	-	-	-
Private Dining Room	-	-	-	-	60	30	32	24	18	40	70
Boardwalk	-	-	-	-	-	100	-	-	-	100	400
Bommie Deck	-	-	-	211	-	90	-	-	-	90	200
Flag Deck	21	6	-	151	-	-	-	-	-	-	120
Keel Deck	-	-	-	211	-	80	-	-	-	90	200



GROUP DINING OPTIONS

Signature Dinners

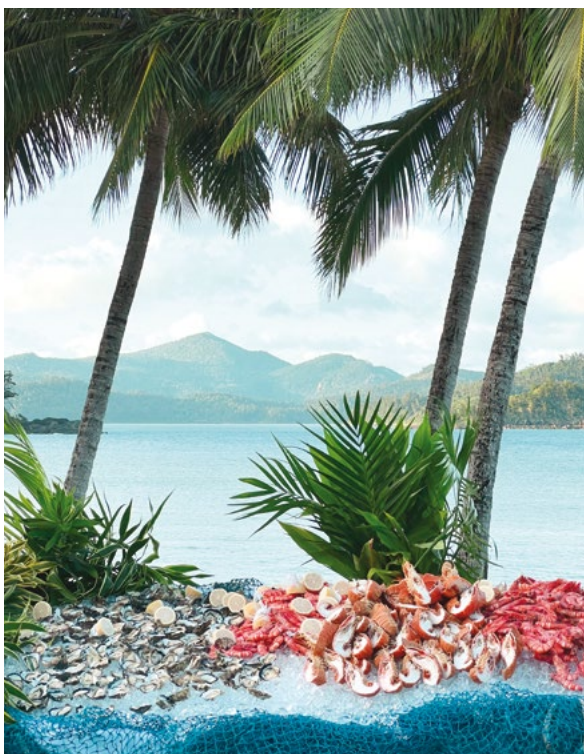
At Hamilton Island we have started the creative process for you, with a large selection of themed dinner and cocktail party ideas, utilising the best venues the island has to offer.

Our Signature Dinners provide you with a one-stop-shop at a variety of locations around the island, with all-inclusive pricing covering the menu, beverage package, venue hire, set-up fees and basic theming... or we can create a tailor-made package just for your group.

With themes including Beachside Bubbles, Night of the Stars, Dinner on the Dock, the Marina Village Street Parade and our popular Watersedge Extravaganza, there is sure to be a theme to excite and delight your guests.

Venues include our new Beach Pavilion, as well as docks and poolside areas, all providing remarkable backdrops with stunning sunsets and ocean views. You can even have your own private island for a night at the Hamilton Island Golf Club located on neighbouring Dent Island.

The Hamilton Island Yacht Club boasts some of the island's most spectacular views over the marina and Dent Passage. Why not watch the sunset with pre-dinner drinks and canapés from the Bommie or Flag Deck, before sitting down to a magnificent dinner on the boardwalk overlooking the marina.



FOOD AND WINE

Restaurants and Cafés

If your group would prefer to dine at leisure, choose from our wide variety of dining options.

Bommie – fine dining at the Hamilton Island Yacht Club

The Clubhouse – lunch with a view at the Hamilton Island Golf Club

coca chu - inspired by the tropical climates of Australia and flavours of South East Asia

Manta Ray - A relaxed coastal Mediterranean menu designed for sharing, with a mix of seafood, meat and vegetarian dishes

Marina Café - all day breakfast, snacks and great coffee by the marina

Marina Tavern - casual pub-style dining

Mariner's - Fresh, local seafood - sourced from the pristine Whitsundays' waterway.

One Tree Hill - light snacks and refreshments overlooking Passage Peak and beyond

Pizzeria and Gelato Bar - gourmet pizzas, homemade gelato and barista-made coffee

Pool Terrace - breakfast, lunch and dinner overlooking the Reef View Hotel pool

Romano's - innovative Italian fare by the marina

Sails - casual poolside dining overlooking Catseye Beach

Takeaway Outlet, Cafes and Bars

Bob's Bakery / Bommie Deck / Bougainvillea Bar / Garden Bar / Hamilton Island Wildlife Café / Ice Cream Parlour / IGA Supermarket and Bottle Shop / Island Bar / Marina Café / Marina Tavern / One Tree Hill / Pizzeria and Gelato Bar / Popeye's Fish & Chips / Reef Lounge / Sails Bar



GROUP ACTIVITIES

Whether it be on land, in the air or on water, Hamilton Island has an endless array of group activities to suit all budgets, group sizes and demographics. Make it an event to remember by treating your delegates to a specially-designed experience that is guaranteed to inspire.

If the motivation of being on a beautiful tropical island is not enough, Hamilton Island has activity ideas that promote teamwork and interaction, including a Go Kart Grand Prix, Beach Olympics and more. One of the most popular activities is the Buggy Rally – an ‘Amazing Race’ style adventure where guests drive their own golf buggy around the island searching for clues to the finish line.

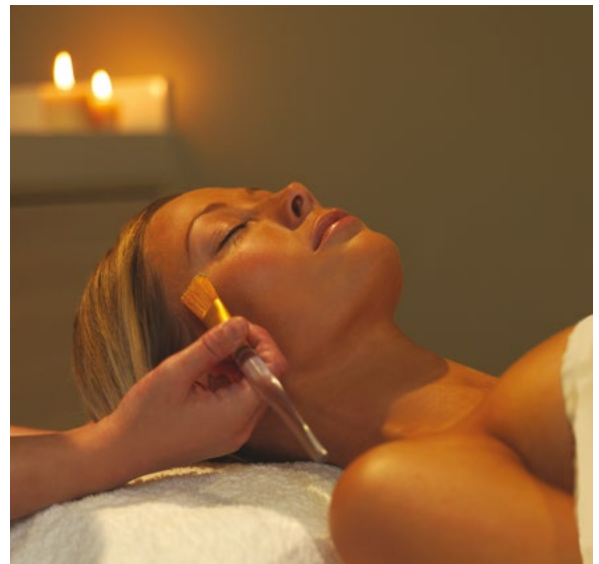
Hamilton Island Golf Club

18-hole, par 71 championship course, measuring 6,120 metres / Designed by five-time British Open winner Peter Thomson to challenge all levels of golf enthusiasts / The only golf course on its own island in Australia / Clubhouse with a restaurant, bar and pro shop / Located on neighbouring Dent Island, access is via a short boat transfer from the Hamilton Island Marina (beside Manta Ray) / Green fees include return boat transfers and use of a two-seater golf buggy on-course

Hamilton Island Golf Club can be incorporated into your program, whether it be as part of an afternoon at leisure or a sole-use Ambrose-style golf tournament. The resident Golf Pro can organise group clinics, ‘Play the Pro’ and many other team building activities.

Spa wumurdaylin

Spa wumurdaylin’s warm and relaxed approach provides a divine relaxation haven, inviting you to indulge in a complete sensory experience. The highly skilled therapists provide treatments rich in aromaceuticals by Waterlily, plus massages, scrubs, rituals and facial therapies. With six treatment rooms, Spa wumurdaylin is the perfect indulgent activity option for your delegates and is available for group bookings.



OVER 65 OTHER ACTIVITIES

(sole use options available)

Hamilton Island has more than 65 activities to choose from, with something to suit every interest and energy level.

Land Art classes / Bushwalking – over 20km of trails / Climbing wall / Clownfish Club kids club / Games arcade / Go-karts / Hamilton Island Golf Club / Hamilton Island Wildlife / Island Bowling / Kids Fun Zone / Kids quads / Mini golf / Off Road Adventure Tours / Retail outlets / Spa wumurdaylin / Sports club and gym / Sunset cocktails at One Tree Hill / Tennis

Air Helicopter, fixed wing and seaplane flights available over the Whitsundays, Whitehaven Beach, the Great Barrier Reef and Heart Reef

Water Catamarans / Dinghy hire / Full day trips to the Great Barrier Reef / Full and half day trips to Whitehaven Beach / Game fishing / High-speed jet boat rides / Jetski tours / Kayaks / PADI open water learn to dive / Sailing – bareboat and chartered / Scuba diving / Sea kayaking / Snorkelling / Stand up paddleboards / Tube rides / Turtle discovery tour / Twilight and dinner cruises / Various island pools / Wakeboarding / Whale watching (Jul-Sept) / Whitsunday Islands and Great Barrier Reef Dive and Snorkel tours / Windsurfing



ACCOMMODATION OPTIONS

Reef View Hotel – spacious hotel style

The Reef View Hotel features extremely spacious, well-appointed rooms all with private balconies overlooking either landscaped gardens or the breathtaking vista of the Coral Sea. The upper-most floors boast 18 suites. All rooms face the Coral Sea complete with outdoor furniture to experience the spectacular sunrises. Additional ReefView Hotel facilities include a business centre, restaurant, bar, tour desk and pool.

Garden View room (floors 1–4)	Bedding configuration 2 x queen beds, max capacity 4 people
Coral Sea View room (floors 5–18)	Bedding configuration 1 x king bed or 2 x queen beds, max capacity 4 people
King Coral Sea View room (floors 13–18)	Bedding configuration 1 x king bed, 1 sofa bed, max capacity 3 people
Reef Family room	Bedding configuration main room – 2 x queen beds, adjoining junior room – 2 x single beds, max room capacity 6 people (2 adults, 4 children under 12 years)
Reef Suites (floor 19)	Bedding configuration 1 x king bed or 2 x queen beds, max capacity 2 people (1 and 2 bedroom Terrace Suites and Presidential Suite also available with spas and plunge pools)
Palm Bungalows	Bedding configuration 1 x king bed, max capacity 2 people Set just outside the ReefView Hotel in lush tropical gardens and with a breezy coastal style

The Reef View Hotel has the following inclusions Return Hamilton Island airport/marina to hotel transfers / Use of catamarans, windsurfers, kayaks, paddle boards and snorkelling equipment / Use of the gym, spa, sauna and tennis courts / Unlimited use of the scheduled 'Island Shuttle' service / Free WiFi



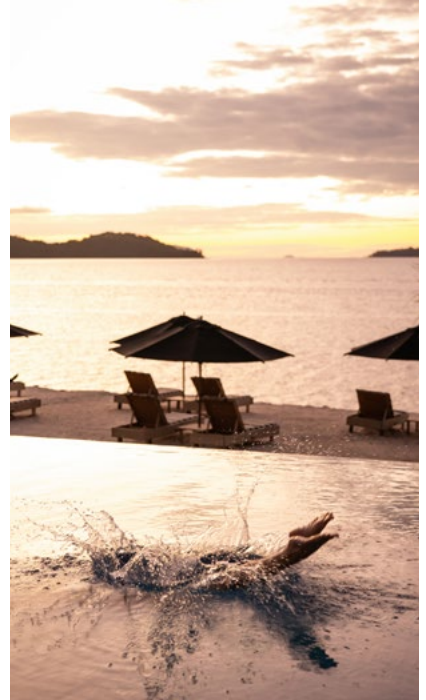
Beach Club – boutique

With its absolute beachfront location, the adults only Beach Club offers the ultimate island holiday experience, perfect for executive retreats, incentive groups or VIP's. Set in landscaped gardens, all 57 rooms face directly onto Catseye Beach, each with their own private courtyard or balcony. Sole use options available.

Beach Club room	Bedding configuration 1 x king bed or twin on request, max room capacity 2 people
------------------------	--

Exclusive inclusions A la carte breakfast daily at the Beach Club restaurant / VIP return Hamilton Island airport/marina to Beach Club transfers / VIP chauffeur service / Use of catamarans, windsurfers, kayaks, paddle boards and snorkelling equipment / Use of the gym, spa, sauna and tennis courts / Exclusive use of the Beach Club lounge and infinity-edge pool / Free WiFi

Note: Beach Club does not cater for persons under the age of 18 years. Minimum night stay applicable. Bookings of 6 or more rooms require sole use of the resort.



ACCOMMODATION OPTIONS

qualia – premium luxury

qualia is a unique Australian expression of world-class luxury, situated on the secluded northern-most tip of Hamilton Island. Inside, feel time unravel in one of 60 exquisitely appointed pavilions that sit in perfect harmony with the rare, natural beauty of the island. Exclusive guest facilities include a private beach, two infinity-edge pools and two restaurants. Or for a truly memorable experience, step inside Spa qualia which offers an extensive range of luxurious treatments.

qualia is the ultimate incentive destination and provides the perfect reward for your top achievers.

Leeward Pavilion Studio style with large sundeck

Bedding configuration 1 x king bed or twin beds on request, max capacity 2 people

Sunset Pavilion 1 bedroom with large sundeck and separate living area

Bedding configuration 1 x king bed or twin beds on request, max capacity 2 people

Windward Pavilion 1 bedroom with private plunge pool

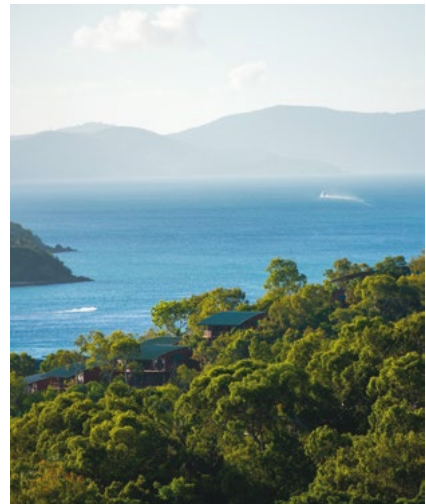
Bedding configuration 1 x king bed or twin beds on request, max capacity 2 people

Beach House 1 bedroom with private lap pool and separate guest pavilion

Bedding configuration 2 x king beds or twin beds on request, max capacity 4 people

Exclusive inclusions VIP chauffeur service / 1 x golf buggy for duration of stay / VIP return Hamilton Island airport/marina to qualia transfers / Turndown service / Use of catamarans, beach kayaks and snorkelling equipment at Pebble Beach, plus windsurfers and paddle boards at Catseye Beach / Access to exclusive guest facilities including two pools, two restaurants, gym, library, business centre and Spa qualia / Private plunge pool (Windward Pavilions only) / Free WiFi

Note: qualia does not cater for persons under the age of 16 years. Minimum night stay applicable. Bookings of 15 or more pavilions require sole use of the resort.



Yacht Club Villas – luxury self-catering

Adjacent to the Hamilton Island Yacht Club, the luxury waterfront Yacht Club Villas offer breathtaking sea views over Dent Passage. With a design emphasis on privacy and space, each villa spans three to four levels according to position and can accommodate up to eight guests. Designed by renowned Australian architect Walter Borda, the four bedroom, four bathroom villas offer a tranquil serenity, located alongside the 301-berth Hamilton Island Marina, within easy reach to all the island has to offer. Free WiFi is available at select locations across the island. The perfect accommodation option for executive retreats.

Hamilton Island Holiday Homes – perfect for families

Hamilton Island offers a range of privately owned self-catering Holiday Homes which are scattered throughout the island. These can accommodate one to eight people in one to four bedroom configurations across Resortsides, Standard, Superior, Deluxe and Luxury categories. The layout, appearance and surroundings of each varies, however each has a fully-equipped kitchen and laundry and all share landscaped gardens and swimming pools and include use of a four-seater golf buggy. Free WiFi is available at select locations across the island.

Note: Three night minimum stay applies for Hamilton Island Holiday Homes and a four night minimum stay for Yacht Club Villas.



ARRIVAL AND DEPARTURE HUB
Commercial airport,
Holiday Homes reception

HAMILTON ISLAND GOLF CLUB
18-hole
championship course
and Clubhouse

HAMILTON ISLAND NORTH
qualia,
Deluxe Holiday Homes

CATSEYE BEACH
See enlargement below

MARINA VILLAGE
See enlargement below

ONE TREE HILL
Lookout and Café, All Saints
Chapel, Deluxe, Superior and
Standard Holiday Homes

MARINA VILLAGE

- 1 Romano's Italian restaurant
- 2 Manta Ray
- 3 Marina Tavern
- 4 Marina Café
- 5 TAKO
- 6 Bob's Bakery
- 7 Popeye's Fish & Chips
- 8 Ice Cream Parlour
- 9 Pizzeria and Gelato Bar
- 10 Post Office
- 11 IGA Supermarket and Bottle Shop
- 12 Pharmacy
- 13 Trader Pete's
- 14 Hamilton Island Yacht Club and Bommie restaurant
- 15 Hamilton Island Golf Club Island Links Ferry
- 16 Yacht Club Villas
- 17 Hesperus lawn
- 18 Explore jetty
- 19 Cruise Whitsundays jetty
- 20 Hamilton Island / Dinner on the Dock jetty
- 21 Retail shops



CATSEYE BEACH

- 1 Beach Club
- 2 Reef View Hotel
- 3 Palm Bungalows
- 4 Resortside Holiday Homes
- 5 Pool Terrace
- 6 Sails Restaurant
- 7 Main Pool and Island Bar
- 8 Bougainvillea Pool and Bar
- 9 Sails Pool
- 10 Tour Desk and retail shops
- 11 Conference Centre
- 12 Beach Pavilion
- 13 Endeavour Room
- 14 Chart Room
- 15 Clownfish Club
- 16 Spa wumurdaylin
- 17 Kegel 9-pin bowling alley
- 18 Hamilton Island Wildlife
- 19 Beach Sports Hut
- 20 Buggy Hire
- 21 coca chu



BUSINESS EVENT FACILITIES MAP

- 1 Chart Room
- 2 Conference Centre
- 3 Endeavour Room
- 4 TAKO
- 5 Beach Pavilion
- 6 Hamilton Island Yacht Club
- 7 Barge Jetty (Dinner on the Dock)



Hamilton Island Business Events
 Level 3, 100 Pacific Highway,
 St Leonards NSW 2065, Australia
P: + 61 2 9433 3333 **F:** + 61 2 9433 0488
E: conference@hamiltonisland.com.au
W: hamiltonisland.com.au/BusinessEvents

Hamilton Island Enterprises Limited



Facebook.com/HIConferences
 Instagram.com/HamiltonIslandBusinessEvents
 @HamiltonIsland #HamiltonIsland