



# HOTEL PACKAGES

Hamilton Island offers a range of packages to suit everyone. From couples to families, or friends travelling together there will be a package that embodies the kind of Whitsunday holiday you are looking for. With inclusions such as trips out to the world-famous Great Barrier Reef or Whitehaven Beach, romantic dinners, spa treatments and activities the kids will love, you'll be spoilt for choice.

## GREAT BARRIER REEF ADVENTURE PACKAGE

A great way to experience one of the seven natural wonders of the world. Spend a full day exploring the Great Barrier Reef, home to some of the most amazing marine life ever seen.

Room type	4 night stay 2 adults	4 night stay 2 adults + 1 child	4 night stay 2 adults + 2 children	Extra night rate (twin share)
<b>Palm Bungalows</b>	\$1,954	\$2,048	\$2,144	\$410
<b>Reef View Hotel</b>				
Garden View room	\$1,810	\$1,904	\$2,000	\$370
Coral Sea View room	\$2,134	\$2,228	\$2,324	\$460
King Coral Sea View room	\$2,242	\$2,336	n/a	\$490
Reef Family Room	\$2,566	\$2,660	\$2,756	\$580
Reef Suite	\$3,034	n/a	n/a	\$710
<b>Beach Club</b>				
Beach Club	\$3,070	n/a	n/a	\$720

All rates are in AUD. Valid: 1 April 2019 – 31 March 2020. Prices are per package based on 2 adults

### Rate inclusions

- / 4 nights' accommodation
- / Full buffet breakfast
- / Full day trip with Cruise Whitsundays to the Great Barrier Reef
- / Return Hamilton Island airport/marina to hotel transfers
- / Use of the gym, spa, sauna, and tennis court hire
- / Use of catamarans, stand up paddleboards, kayaks, windsurfers and snorkelling equipment
- / Unlimited use of the scheduled Island Shuttle service
- / Complimentary Wifi
- / Kids Stay and Eat Free program (conditions apply)

### Additional Reef View Hotel Suite inclusions:

- / VIP return Hamilton Island airport/marina to hotel transfers
- / Daily newspaper

### Additional Beach Club inclusions:

- / A la carte breakfast in the Beach Club Restaurant
- / VIP return Hamilton Island airport/marina to Beach Club transfers
- / VIP chauffeur service for duration of stay
- / Use of the Beach Club lounge, pool and restaurant

**Note:** Beach Club does not cater for guests under the age of 18 years. Terms and conditions apply.

**Blackout dates:** The Great Barrier Reef Adventure package is not available over the dates 21 December 2019 – 5 January 2020 inclusive. Additional charges will apply for extra guests and/or extra bedding. The above package rates are applicable for persons aged 13+ years. Rates for additional persons 0-12 years inclusive are available on request.



Hardy Reef – Great Barrier Reef

For reservations call 137 333 (within Australia) or (+61) 2 9433 0444 (outside Australia),  
email: [vacation@hamiltonisland.com.au](mailto:vacation@hamiltonisland.com.au) or visit [www.hamiltonisland.com.au](http://www.hamiltonisland.com.au)

# HOTEL PACKAGES

## ROMANTIC ESCAPE PACKAGE

From the moment you arrive on Hamilton Island, the pampering begins. Begin your getaway together with sparkling wine, share an intimate luxury sail to witness a spectacular Whitsunday sunset, and indulge in the ultimate gourmet dining experience overlooking the glistening water of the Hamilton Island Marina.

Room type	4 night stay (twin share)	Extra night rate (twin share)
<b>Palm Bungalows</b>	\$1,956	\$410
<b>Reef View Hotel</b>		
Garden View room	\$1,812	\$370
Coral Sea View room	\$2,136	\$460
King Coral Sea View room	\$2,244	\$490
Reef Suite	\$3,036	\$710
<b>Beach Club</b>		
Beach Club	\$3,072	\$720

\* All rates are in AUD. Valid: 1 April 2019 – 31 March 2020. Prices are per package based on 2 adults

### Rate inclusions

- / 4 night's accommodation
- / Full buffet breakfast
- / Twilight sail aboard 'On The Edge' catamaran on one evening
- / Choice of a 3 course set dinner at Romano's Italian Restaurant, Beach Club Restaurant or Mariner's Restaurant on one evening
- / A bottle of sparkling wine
- / Return Hamilton Island airport/marina to hotel transfers
- / Use of the gym, spa, sauna, and tennis court hire
- / Use of catamarans, stand up paddleboards, kayaks, windsurfers and snorkelling equipment
- / Unlimited use of the scheduled Island Shuttle service
- / Complimentary Wifi

### Additional Reef View Hotel Suite inclusions:

- / VIP return Hamilton Island airport/marina to hotel transfers
- / Daily newspaper

### Additional Beach Club inclusions:

- / A la carte breakfast in the Beach Club Restaurant
- / VIP return Hamilton Island airport/marina to Beach Club transfers
- / VIP chauffeur service for duration of stay
- / Use of the Beach Club lounge, pool and restaurant

**Note:** Beach Club does not cater for guests under the age of 18 years. Terms and Conditions apply. Additional charges will apply for extra guests and/or extra bedding. Package only available for 2 adults, 18+ years.

**Blackout dates:** The Romantic Escape package is not available over the dates 21 December 2019 – 5 January 2020 inclusive. To avoid disappointment, we book the On The Edge Sail in advance for all guests. Guests can reconfirm their booking with Hamilton Island Tour Desk upon arrival. Tour bookings can be made within 7-10 days of your travel date. Please note drinks are not included.



Romano's





# HOTEL PACKAGES

## BEST OF THE WHITSUNDAYS PACKAGE

A great way for you to experience everything the Whitsundays and the Great Barrier Reef has to offer. Witness the whitest sand in the world on Whitehaven Beach, feast your eyes on the most exotic marine life in the beautiful waters of the Great Barrier Reef and get up close and personal with a collection of native animals including koalas, kangaroos, crocodiles, wombats and various reptiles at WILDLIFE Hamilton Island.

Room type	4 night stay 2 adults	4 night stay 2 adults + 1 child	4 night stay 2 adults + 2 children	Extra night rate (twin share)
<b>Palm Bungalows</b>	\$2,204	\$2,354	\$2,504	\$410
<b>Reef View Hotel</b>				
Garden View room	\$2,060	\$2,210	\$2,360	\$370
Coral Sea View room	\$2,384	\$2,534	\$2,684	\$460
King Coral Sea View room	\$2,492	\$2,642	N/A	\$490
Reef Family Room	\$2,816	\$2,966	\$3,116	\$580
Reef Suite	\$3,284	N/A	N/A	\$710
<b>Beach Club</b>				
Beach Club	\$3,320	N/A	N/A	\$720

\* All rates are in AUD. The above rates are applicable when adults = persons 13+ years and children = persons 0-12 years inclusive. Valid: 1 April 2019 – 31 March 2020.

### Rate inclusions

- / 4 nights' accommodation
- / Full buffet breakfast
- / Full day trip with Cruise Whitsundays to the Great Barrier Reef
- / Half day trip with Cruise Whitsundays to Whitehaven Beach
- / Weekly entry to WILDLIFE Hamilton Island
- / Return Hamilton Island airport/marina to hotel transfers
- / Use of catamarans, stand up paddleboards, kayaks, windsurfers and snorkelling equipment
- / Use of the gym, spa, sauna, and tennis court hire
- / Unlimited use of the scheduled Island Shuttle service
- / Complimentary Wifi
- / Kids Stay and Eat Free program (conditions apply)

### Additional Reef View Hotel Suite inclusions:

- / VIP return Hamilton Island airport/marina to hotel transfers
- / Daily newspaper

### Additional Beach Club inclusions:

- / A la carte breakfast in the Beach Club Restaurant
- / VIP return Hamilton Island airport/marina to Beach Club transfers
- / VIP chauffeur service for duration of stay
- / Use of the Beach Club lounge, pool and restaurant

**Note:** Beach Club does not cater for guests under the age of 18 years

**Note:** Terms and conditions apply

**Blackout dates:** The Best of Whitsundays package is not available over the dates 21 December 2020 – 5 January 2020 inclusive. Additional charges will apply for guests and/or extra bedding.



Wildlife Park



Day trip to the Great Barrier Reef

# HOTEL PACKAGES

## GOLF AND SPA PACKAGE

The Hamilton Island Golf Club is a Peter Thomson-designed golf course on neighbouring Dent Island. Challenge yourself to a round whilst experiencing the panoramic views of the Whitsundays. At the end of the day, relax and unwind with a body treatment at Hamilton Island's Spa wumurdaylin.

Room type	4 night stay (twin share)	Extra night rate (twin share)
<b>Palm Bungalows</b>	\$1,764	\$410
<b>Reef View Hotel</b>		
Garden View room	\$1,620	\$370
Coral Sea View room	\$1,944	\$460
King Coral Sea View room	\$2,052	\$490
Reef Suite	\$2,844	\$710
<b>Beach Club</b>	\$2,880	\$720

\* All rates are in AUD. Rates Valid: 1 April 2019 – 31 March 2020. Prices are per package based on 2 adults.

### Rate inclusions

- / 4 nights' accommodation
- / 1 x 18-hole round of golf for one adult (includes return launch transfers from Hamilton Island and use of a two-seater electric buggy on-course only)
- / 1 x 'Destination De Stress' massage at the Spa wumurdaylin
- / Full buffet breakfast
- / Return Hamilton Island airport/marina to hotel transfers
- / Use of catamarans, stand up paddleboards, kayaks, windsurfers and snorkelling equipment
- / Use of the gym, spa, sauna, and tennis court hire
- / Unlimited use of the scheduled Island Shuttle service
- / Complimentary Wifi
- / Kids Stay and Eat Free program (conditions apply)

### Additional Reef View Hotel Suite inclusions:

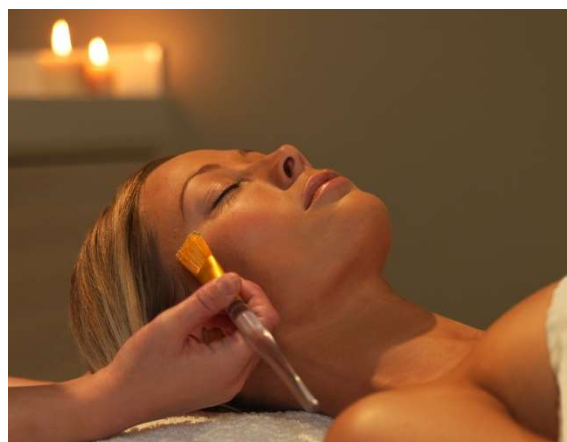
- / VIP return Hamilton Island airport/marina to hotel transfers
- / Daily newspaper

### Additional Beach Club inclusions:

- / A la carte breakfast in the Beach Club Restaurant
- / VIP return Hamilton Island airport/marina to Beach Club transfers
- / VIP chauffeur service for duration of stay
- / Use of the Beach Club lounge, pool and restaurant

**Note:** Beach Club does not cater for guests under the age of 18 years

**Note:** Terms and conditions apply



Spa Wumurdaylin



Spa Wumurdaylin

Additional charges will apply for extra guests and/or bedding. The above rates are applicable for persons aged 13+ years. The rates are based on the inclusion of 1 x round of golf and 1 x spa treatment in a configuration regardless of number of guests in-room. **Blackout dates:** The Golf and Spa package is not available over the dates 21 December 2019 – 5 January 2020 inclusive.





# HOTEL PACKAGES

## REEF DIVE EXPERIENCE

Enjoy a full-day Great Barrier Reef diving adventure with Explore Group, which takes you to selected moorings around Bait Reef, including the famous Stepping Stones, Paradise Lagoon and Manta Ray Drop Off. With all equipment provided for diving, a full buffet lunch and light refreshments throughout the day, this is a tour you don't want to miss. This high-speed 24m catamaran rarely takes more than 60 passengers ensuring a boutique and intimate experience on board and a less crowded environment out at the reef. Once there, you will have a minimum of three and a half hours to snorkel or dive, swim and splash.

Room type	4 night stay (twin share)	Extra night rate (twin share)
<b>Palm Bungalows</b>	\$2,106	\$410
<b>Reef View Hotel</b>		
Garden View room	\$1,962	\$370
Coral Sea View room	\$2,286	\$460
King Coral Sea View room	\$2,394	\$490
Reef Family room	\$2,718	\$580
Reef Suite	\$3,186	\$710
<b>Beach Club</b>	\$3,222	\$720

\* All rates are in AUD. Rates Valid: 1 April 2019 – 31 March 2020. Prices are per package based on 2 adults

### Rate inclusions

- / 4 nights' accommodation
- / Full day Great Barrier Reef dive adventure with Explore Group per adult
- / Full buffet breakfast
- / Return Hamilton Island airport/marina to hotel transfers
- / Use of catamarans, stand up paddleboards, kayaks, windsurfers and snorkelling equipment
- / Use of the gym, spa, sauna, and tennis court hire
- / Unlimited use of the scheduled 'Island Shuttle service
- / Complimentary Wifi
- / Kids Stay and Eat Free program (conditions apply)

### Additional Reef View Hotel Suite inclusions:

- / VIP return Hamilton Island airport/marina to hotel transfers
- / Daily newspaper

### Additional Beach Club inclusions:

- / A la carte breakfast in the Beach Club Restaurant
- / VIP return Hamilton Island airport/marina to Beach Club transfers
- / VIP chauffeur service for duration of stay
- / Use of the Beach Club lounge, pool and restaurant

**Note:** Beach Club does not cater for guests under the age of 18 years

**Note:** Terms and conditions apply



Great Barrier Reef



Heart Reef Great Barrier Reef

Additional charges will apply for extra guests and/or bedding. The above rates are applicable for persons aged 13+ years. Guests must be certified divers and present dive card at the Explore Group office the day before the tour. Package not suitable for beginner/introductory dives. **Blackout dates:** The Reef Dive Experience package is not available over the dates 21 December 2019 – 5 January 2020 inclusive.



# HOTEL PACKAGES

## SNORKEL AND EXPLORE EXPERIENCE

Enjoy a full-day Great Barrier Reef snorkelling adventure with Explore Group, which takes you to selected moorings around Bait Reef, including the famous Stepping Stones, Paradise Lagoon and Manta Ray Drop Off. With all equipment provided for snorkelling, a full buffet lunch and light refreshments throughout the day, this is a tour you don't want to miss. This high-speed 24m catamaran rarely takes more than 60 passengers ensuring a boutique and intimate experience on board and a less crowded environment out at the reef. Once there, you will have a minimum of three and a half hours to snorkel, swim and splash.

Room type	4 night stay (twin share)	Extra night rate (twin share)
<b>Palm Bungalows</b>	\$1,918	\$410
<b>Reef View Hotel</b>		
Garden View room	\$1,774	\$370
Coral Sea View room	\$2,098	\$460
King Coral Sea View room	\$2,206	\$490
Reef Family room	\$2,530	\$580
Reef Suite	\$2,998	\$710
<b>Beach Club</b>	\$3,034	\$720

\* All rates are in AUD. Rates Valid: 1 April 2019 – 31 March 2020. Prices are per package based on 2 adults

### Rate inclusions

- / 4 nights' accommodation
- / Full day Great Barrier Reef snorkel adventure with Explore Group per adult
- / Full buffet breakfast
- / Return Hamilton Island airport/marina to hotel transfers
- / Use of catamarans, stand up paddleboards, kayaks, windsurfers and snorkelling equipment
- / Use of the gym, spa, sauna, and tennis court hire
- / Unlimited use of the scheduled 'Island Shuttle' service
- / Complimentary Wifi
- / Kids Stay and Eat Free program (conditions apply)

### Additional Reef View Hotel Suite inclusions:

- / VIP return Hamilton Island airport/marina to hotel transfers
- / Daily newspaper

### Additional Beach Club inclusions:

- / A la carte breakfast in the Beach Club Restaurant
- / VIP return Hamilton Island airport/marina to Beach Club transfers
- / VIP chauffeur service for duration of stay
- / Use of the Beach Club lounge, pool and restaurant

Beach Club does not cater for guests under the age of 18 years

**Note:** Terms and conditions apply



Aerial View – Great Barrier Reef



Snorkelling the Great Barrier Reef

Additional charges will apply for extra guests and/or bedding. The above rates are applicable for persons aged 13+ years. **Blackout dates:** The Snorkel and Explore Experience package is not available over the dates 21 December 2019 – 5 January 2020 inclusive.





# HOTEL PACKAGES

## WHITEHAVEN BEACH BY HELI

No trip to the Whitsundays would be complete without a visit to Whitehaven Beach to witness the whitest sand in the world, and what better way to experience it than with a loved one and a glass of sparkling wine. Fly by helicopter and take in the breathtaking aerial view of the surrounding Whitsunday Islands and fringing reefs.

Room type	4 night stay (twin share)	Extra night rate (twin share)
<b>Palm Bungalows</b>	\$2,104	\$410
<b>Reef View Hotel</b>		
Garden View Room	\$1,960	\$370
Coral Sea View Room	\$2,284	\$460
King Coral Sea View Room	\$2,392	\$490
Reef Suite	\$3,184	\$710
<b>Beach Club</b>	\$3,220	\$720

\* All rates are in AUD. Rates Valid: 1 April 2019 – 31 March 2020. Prices are per package based on 2 adults

### Rate inclusions

- / 4 nights' accommodation
- / Whitehaven Beach Getaway by helicopter including sparkling wine, juice and water
- / Full buffet breakfast (A la carte breakfast for Beach Club guests)
- / VIP return Hamilton Island airport/marina to hotel transfers
- / Use of catamarans, stand up paddleboards, kayaks, windsurfers and snorkelling equipment
- / Use of the gym, spa, sauna, and tennis court hire
- / Unlimited use of the scheduled 'Island Shuttle' service
- / Complimentary Wifi
- / Kids Stay and Eat Free program (conditions apply)

**Note:** Beach Club does not cater for guests under the age of 18 years

**Note:** Terms and conditions apply



Whitehaven Beach

The above rates are applicable for persons aged 13+ years. **Blackout dates:** The Whitehaven Beach by Heli package is not available over the dates 21 December 2019 – 5 January 2020 inclusive.



## KIDS STAY AND EAT FREE PROGRAM

### Accommodation

Children 12 years and under stay free of charge when sharing with parents and using existing bedding. Cots are free of charge and should be requested at time of booking. Where children 12 years and under do not use existing bedding, a rollaway bed is available at an additional \$45 per night, which is payable direct to the hotel. Please note that Beach Club does not cater for guests under the age of 18 years.

### Meals

Children 12 years and under eat free when selecting from the special kids menu and dining with parents in the selected restaurants below:

- Manta Ray Cafe (lunch and dinner only)
- Pool Terrace (breakfast [Reef View Hotel guests only], lunch and dinner)
- Sails Steak and Seafood Grill (breakfast, lunch and dinner)
- WILDLIFE Hamilton Island (breakfast only)
- coca chu (dinner only)
- TAKO (dinner only)

## CLOWNFISH CLUB

(Organised day-care and child activities)

Hamilton Island offers a child care facility, Clownfish Club. This facility offers high quality care and is operated by fully qualified early childhood leaders. Open 5 days a week (Monday, Tuesday, Thursday, Friday & Saturday) from 8.30am to 5.00pm, and catering for children aged between 6 weeks and 14 years, parents can choose from the following sessions:

- **Morning Session** 8.30am – 12.00pm
- **Afternoon Session** 1.30pm - 5.00pm
- **Half Day Session** 8.30am – 12.00pm and 1.30pm – 5.00pm
- **Full Day Session** 8.30am – 5.00pm

The Clownfish Club is subject to availability and bookings are essential. Bottles and baby food must be supplied if required. Rates for all sessions are available on application and subject to change. The Clownfish Club also offers babysitting services 7 days a week.

Clownfish Club contact details

Phone: 07 4946 8941

Email: [clownfish@hamiltonisland.com.au](mailto:clownfish@hamiltonisland.com.au)



## FREQUENTLY ASKED QUESTIONS

### How do I get to Hamilton Island?

Hamilton Island is easily accessible, with direct flights from Sydney, Brisbane, Melbourne and Cairns with Jetstar, Virgin Australia and Qantas. Hamilton Island Holidays can assist with airfares and travel insurance if required. If you are travelling locally you can reach Hamilton Island by ferry. Cruise Whitsundays operate regular ferry services daily from Port of Airlie Marina, and can be contacted on 07 4967 5455 or visit [www.cruisewhitsundays.com.au](http://www.cruisewhitsundays.com.au)

### What is the weather like on Hamilton Island?

Hamilton Island enjoys a year-round warm climate with an average temperature of 27.4 degrees celsius. Our average monthly temperatures are listed below:

January	31° C - 87° F	July	22° C - 71° F
February	30° C - 86° F	August	23° C - 73° F
March	29° C - 84° F	September	25° C - 76° F
April	27° C - 80° F	October	28° C - 82° F
May	24° C - 75° F	November	29° C - 84° F
June	22° C - 71° F	December	30° C - 86° F

### What options are there for dining?

With 12 restaurants and takeaway outlets to choose from on Hamilton Island, there's something new and exciting to tempt every taste bud and budget. Enjoy a huge range of cuisine including Italian, Asian, Modern Australian and the freshest seafood. For a full range of dining options and indicative prices, visit [www.hamiltonisland.com.au/food-wine](http://www.hamiltonisland.com.au/food-wine)

### What facilities are available on Hamilton Island?

With over 20 boutique and specialty stores, we cater for all your shopping needs.

- 4 pools (beach towels are supplied at each hotel reception and in individual Holiday Homes)
- IGA Supermarket, newsagent, TAB, Video Shop (which also hires CD and DVD players)
- Hairdresser and Beautician
- Medical Centre, Westpac Bank and ATM's
- Post Office, Pharmacy, Florist, Chapel
- Commercial Marina / Marina Tavern / Bottle Shop

### What activities are available on Hamilton Island?

Hamilton Island offers a range of over 60 activities, most running on a daily basis. To view a full list of activities or for more information on activities available visit [www.hamiltonisland.com.au/activities](http://www.hamiltonisland.com.au/activities)

### What do I do when I arrive onto Hamilton Island, how do I get to reception?

Upon arrival to the Airport on Hamilton Island, please make your way to the reception desk located at the luggage collection area. A porter will assist you with your luggage and escort you to the correct shuttle bus to your hotel reception for check-in. Holiday Home guests will be greeted on arrival by a staff member who will escort you to the Holiday Homes reception, located at the airport. For guests arriving via ferry, upon arrival to the Hamilton Island Marina, please make your way to the designated shuttle to your relevant hotel for your check-in.

### Why is it so important to advise my arrival details?

Arrival details are essential for Beach Club and Reef View Hotel Suite guests to ensure that VIP transfers can be provided. Check-in is not guaranteed until 2pm however, we will endeavour to have your room ready for your arrival. Having arrival details noted in your booking makes this easier for us to do so. We also suggest you pre-pack your bathers or change of clothes into your hand luggage so that you can do some exploring whilst your accommodation is being prepared for you.

### Do you get stingers on Hamilton Island?

Summer is traditionally stinger season in Tropical North Queensland, however on Hamilton Island, being as far offshore as we are, we do not have a problem with Box Jellyfish. In recent years there have been rare instances where the Irukanji Jellyfish has caused illness in some individuals with pre-existing medical conditions. We keep all guests fully up to date with information delivered to all rooms if we consider it a risk to swim in the ocean. We do also have stinger suits available for hire or purchase from our Beach Sports Hut.

### How do I find out information whilst on the island, quickly and easily?

Mobile phones have full coverage on Hamilton Island and we recommend downloading our Hamilton Island App prior to arrival. Our App allows you to check the weather, book accommodation, find useful numbers, locate restaurants and tours and see what's fun things are happening on the Island during your stay and much more. Find out more about our app or to download, visit [www.hamiltonisland.com.au/about-the-island/app](http://www.hamiltonisland.com.au/about-the-island/app)

### Are any of the pools on Hamilton Island heated?

As the Island experiences tropical weather all year round, most pools on the Island are not heated. During the colder months however, the pools at the Reef View Hotel and the Beach Club are temperature controlled.

### How do I organise payment of my final balance for my stay?

When your final balance is due, this will be deducted automatically by one of our Reservation Consultants so there is no need to call. Should you wish to organise a different method of payment, or to change any of your details, please feel free to reply to your confirmation email with the new instructions or call us on 137 333 to speak to a consultant over the phone.

### Is there anything else I need to know?

- If you are travelling with young children, complimentary cots and highchairs are available on request. Please request this prior to arrival to avoid any inconvenience.
- Please note that all credit card transactions will incur a fee as follows: 1.25% for Visa and MasterCard and 3.36% for American Express). Alternatively EFTPOS is available upon check out which has no transaction fee. Note: credit card fees are subject to change.