



The Reef View Hotel features extremely large, well-appointed rooms all with private balconies overlooking either landscaped gardens or the breathtaking vista of the Coral Sea. The upper-most floors boast 18 luxuriously appointed suites. All rooms face the Coral Sea complete with outdoor furniture to experience the spectacular sunrises. Additional Reef View Hotel facilities include a restaurant and bar.

**Property features:** Restaurant, bar and lounge, 35m pool, business centre, porters desk, room service, disabled facilities, 24 hour reception, beach towels provided, access to internet, air-conditioning and ceiling fan, private balcony, television, bar fridge and mini bar, tea and coffee making facilities and rooms serviced daily.

#### INCLUSIONS

- / Return Hamilton Island airport/marina to hotel transfers
- / Use of catamarans, kayaks, stand up paddleboards, windsurfers and snorkelling equipment
- / Use of scheduled 'Island Shuttle' service
- / Use of the gym, spa, sauna, and tennis court
- / Kids Stay and Eat Free program (conditions apply)
- / Baby's First Holiday features

Room Type	Max Guests	Bedding Configuration
Garden View Room	4	2 x queen beds
Coral Sea View Room	4	2 x queen beds
King Coral Sea View	3	1 x king bed
Reef Family Room	6	2 x queen beds and 2 x single beds



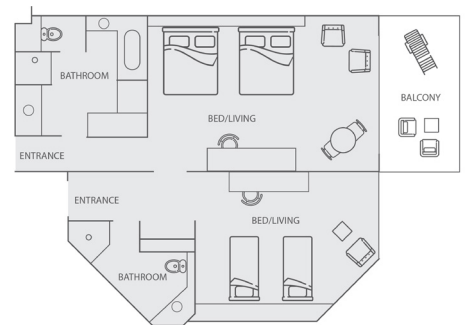
*Garden View Room*



*Coral Sea View Room*



*King Coral Sea View Room*



*Reef Family Room*



For more information call 137 333, email [vacations@hamiltonisland.com.au](mailto:vacations@hamiltonisland.com.au) or visit [hamiltonisland.com.au/reef-view-hotel](http://hamiltonisland.com.au/reef-view-hotel)





Unwind, relax and stretch out in a luxury suite on one of the top floors of the Reef View Hotel. The Reef View Hotel features extremely large, well-appointed rooms all with private balconies overlooking either landscaped gardens or the breathtaking vista of the Coral Sea. Whether you are travelling with your partner, family or friends, these suites cater perfectly for all holiday groups and occasions.

**Property features:** Restaurant, bar and lounge, 35m pool, business centre, porters desk, room service, disabled facilities, 24 hour reception, beach towels provided, access to internet, air-conditioning and ceiling fan, private balcony, television, bar fridge and mini bar, tea and coffee making facilities and rooms serviced daily.

#### INCLUSIONS

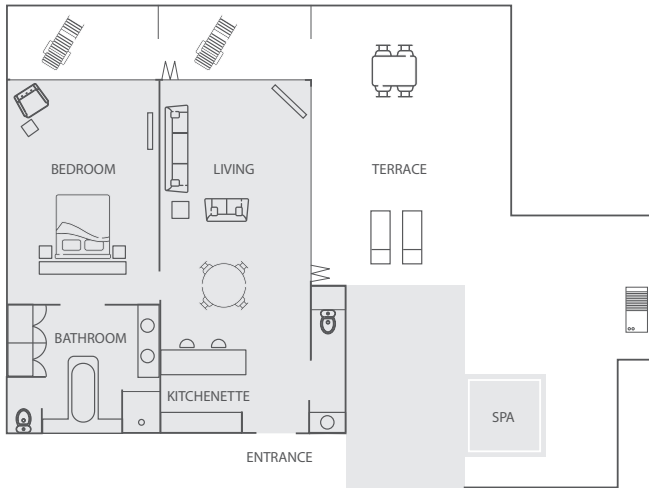
- / VIP Hamilton Island airport/marina to hotel transfers
- / Breakfast daily
- / Use of catamarans, kayaks, stand up paddleboards, windsurfers and snorkelling equipment
- / Use of scheduled 'Island Shuttle' service
- / Use of the gym, spa, sauna, and tennis court
- / Kids Stay and Eat Free program (conditions apply)
- / Baby's First Holiday features
- / Daily newspaper
- / Presidential Suite include use of a four seater golf buggy for the duration of stay
- / Complimentary non alcoholic beverages from the minibar
- / Suite concierge desk

Room Type	Max Guests	Bedding Configuration
Reef Suite	2	2 x queen beds or 1 x king bed
Reef Family Suite	6	2 x queen beds and 2 x single beds
Superior Reef Suite	2	2 x queen beds or 1 x king bed
One Bedroom Terrace Suite	2	1 x king bed (non split)
Two Bedroom Terrace Suite	6	2 x queen beds and 1 x king split
Presidential Suite	6	1 x king bed and 2 x queen beds
Superior Presidential Suite	6	1 x king bed and 2 x queen beds

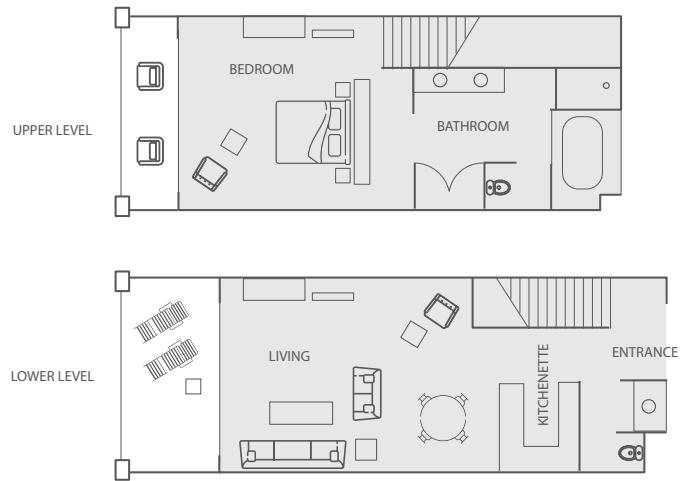


For more information call 137 333, email [vacations@hamiltonisland.com.au](mailto:vacations@hamiltonisland.com.au) or visit [hamiltonisland.com.au/reef-view-hotel](http://hamiltonisland.com.au/reef-view-hotel)

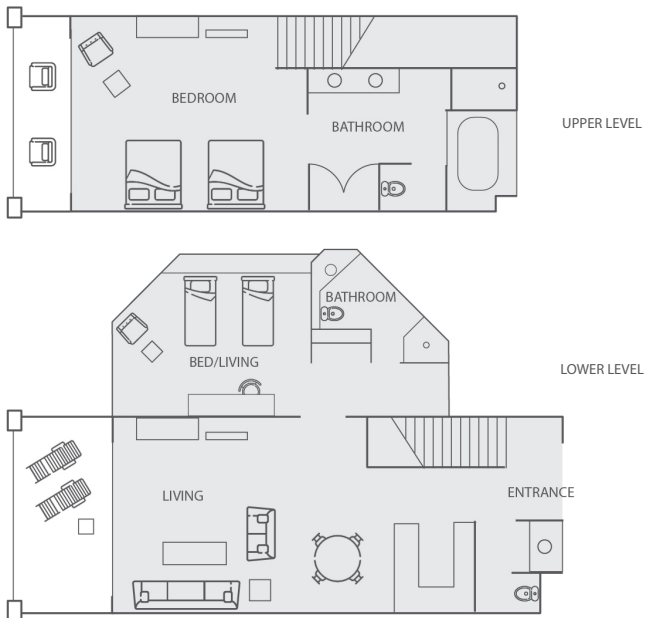
### One Bedroom Terrace Suite



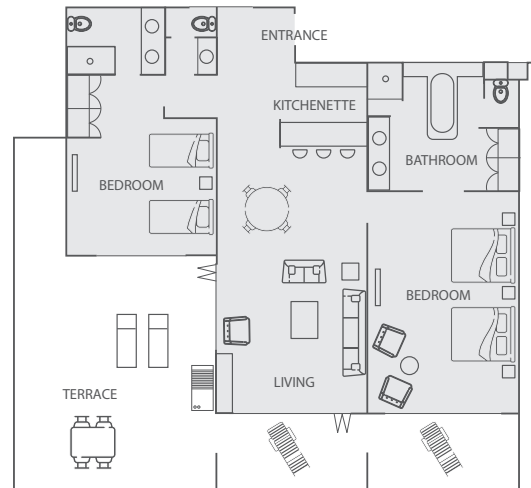
### Reef Suite



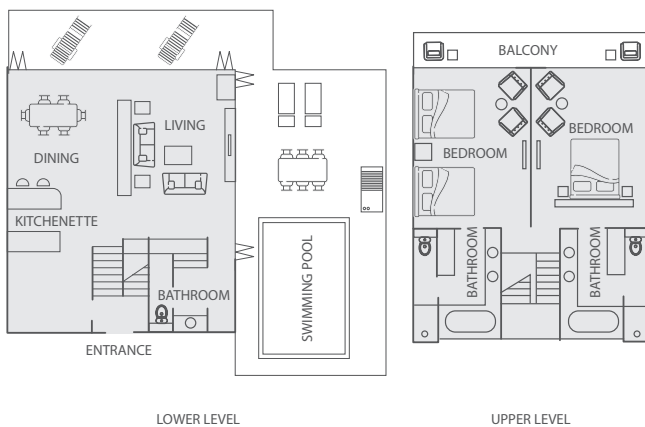
### Reef Family Suite



### Two Bedroom Terrace Suite



### Presidential and Superior Presidential Suite



For more information call 137 333, email [vacations@hamiltonisland.com.au](mailto:vacations@hamiltonisland.com.au) or visit [hamiltonisland.com.au/reef-view-hotel](http://hamiltonisland.com.au/reef-view-hotel)